

# Canon

 Color  
imageRUNNER®  
LBP5975  
LBP5970

 Color  
imageRUNNER®  
LBP5460

 imageRUNNER®  
LBP3460



desktop productivity  
color and/or black and white  
networked

**OFFICE SOLUTIONS**



## At-a-Glance



 **Color  
imageRUNNER®**  
L B P 5 9 7 5  
L B P 5 9 7 0



 **Color  
imageRUNNER®**  
L B P 5 4 6 0



 **imageRUNNER®**  
L B P 3 4 6 0

<b>PRINT SPEED</b>	Up to 31/30 ppm (monochrome/color, letter)	Up to 31/31 ppm (monochrome/color, letter)	Up to 35 ppm (monochrome, letter)
<b>RESOLUTION</b>	Up to 1200 x 1200 dpi	600 x 600 dpi	600 x 600 dpi
<b>PRINT DRIVERS</b>	UFR II/PCL 5c/6 (standard) PostScript® 3™ emulation (optional)	UFR II/PCL 5c/6 and PostScript 3 emulation (standard)	UFR II/PCL 5e/6 (standard)
<b>PAPER SIZES</b>	Up to ledger (11" x 17")	Up to legal (8.5" x 14")	Up to legal (8.5" x 14")
<b>PAPER CAPACITY</b>	Up to 320 sheets (standard) 1,970 sheets (maximum)	Up to 350 sheets (standard) 850 sheets (maximum)	Up to 350 sheets (standard) 850 sheets (maximum)
<b>FINISHING</b>	Corner Stapling (LBP5975 model only)	N/A	N/A

Note: Refer to product specifications for more details.

## imageRUNNER performance for desktop productivity

### **Paramount productivity, outstanding capabilities, and uncompromising output in four impressive workgroup laser beam printers.**

When you need a high-quality printing solution for desktop and workgroup document production, the Canon imageRUNNER LBP Series delivers fast output speeds, available compact integrated finishing capabilities, energy efficiency, and simplified operation and maintenance.

The Canon imageRUNNER LBP Series delivers the productivity and reliability you demand in a single, scalable solution – all from one of the world’s most respected names in document imaging.

#### **Powered by innovative technology**

The Canon Color imageRUNNER LBP5975/5970/5460 and imageRUNNER LBP3460 models benefit from innovations refined over decades of research and development. Many of the same technologies that enable high quality and productivity in the renowned imageRUNNER line are powering the Canon imageRUNNER LBP Series. Never again will you need to sacrifice speed or capabilities when choosing a compact desktop laser printer for your office.

#### **Meet the demands of any corporate workgroup**

The Canon Color imageRUNNER LBP5975/5970/5460 and imageRUNNER LBP3460 can handle a broad spectrum of environments. Offering a variety of different output speeds and capabilities, there’s a device to address the need for color output, large paper sizes, and even basic finishing. Each model includes port interfaces for 10/100Base-TX Ethernet (RJ-45) to provide network printing and USB 2.0 for local connectivity.



# Advanced technology for extraordinary documents

## Canon engine innovations for peak performance

The Canon imageRUNNER LBP Series delivers the desktop productivity and advanced technology users demand in four exceptionally compact models. The Color imageRUNNER models utilize robust four-drum engine technology and Canon's patented Color RAPID Fusing System to produce beautiful, high-speed color and monochrome documents. The imageRUNNER LBP3460 model uses the patented RAPID Fusing System to quickly output crisp black-and-white documents.

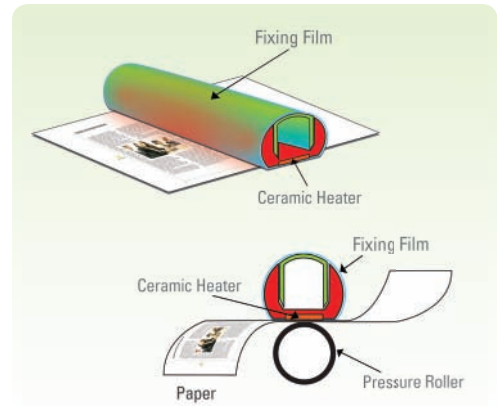
These imaging innovations have virtually no warm-up time and fast printout times with less heat. Each model is ENERGY STAR® qualified, with the LBP5975/5970 devices using 1W of power or less and the LBP5460 drawing as little as 1.8W of power in Deep Sleep Mode.

The imageRUNNER LBP Series is powered by the same high-performance system architecture developed for Canon's advanced imageRUNNER line, delivering extraordinary productivity, robust functionality, and enhanced processing capacity. The compact size and fast first-printout times of the Color imageRUNNER LBP5975/5970/5460 models are realized through a revolutionary short vertical paper path design.

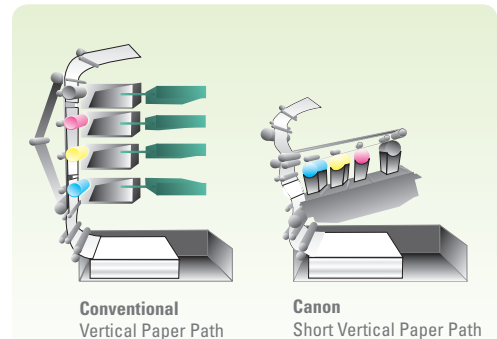
## Remarkable image quality

The Color imageRUNNER LBP5975/5970 devices utilize an innovative, compact 4-in-1 laser beam unit to achieve true 1200-dpi output in Super Fine Mode for increased image clarity and gradients or Fine Mode for precise graphics at 600 dpi. Canon's proprietary Advanced Smoothing Technology (AST) can further enhance image quality by smoothing the edges of printed text and graphics. The Color imageRUNNER LBP5460 and imageRUNNER LBP3460 models both deliver crisp output at up to 600 dpi, equivalent in appearance to 2400 x 600 dpi.

## RAPID Fusing System Technology



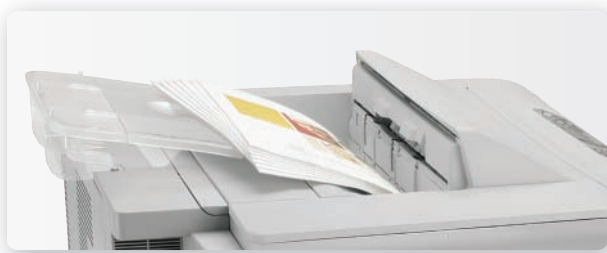
## Efficient Output Performance



# imageRUNNER productivity features

## Compact finishing capabilities

The Color imageRUNNER LBP5975 device includes a basic corner stapling feature as standard. The compact, integrated stapling capability makes it convenient for users to quickly and easily produce multipage documents from the print driver. The finisher can staple up to 15 sheets of letter or ledger paper at a time, in a variety of corner positions.\*



Stapled Document Output

## Alternative output features

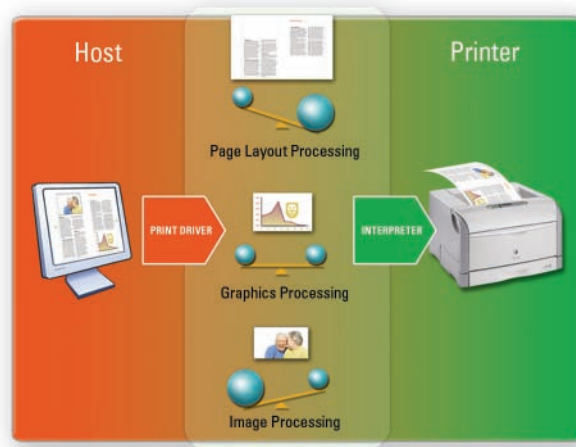
The Color imageRUNNER LBP5975/5970/5460 models enable users to print PDF, TIFF, and JPEG files through the Remote UI utility without having to install print drivers.\*\* Users can even print documents by sending them via e-mail to a dedicated POP-based e-mail account that's been specifically configured for the device. This enables guest users to output documents easily or print them remotely.\*\*\*

## Optimized document processing

All four models in the Canon imageRUNNER LBP Series include the UFR II Print Controller, which is optimized to produce high-speed color and mono-chrome documents. It automatically distributes data processing between the print driver on the user's desktop computer and the imageRUNNER LBP device.

When users print a document, the intelligent driver architecture determines the optimal balance of processing between the desktop computer and the imageRUNNER LBP device by analyzing the layout and graphic components of each page. This unique approach maintains exceptionally high print performance on even complex documents that include images, graphics, and text.

The embedded print controller on all models also provides standard PCL support. PostScript 3 emulation is an available option on the Color imageRUNNER LBP5975/5970 models and is standard on the Color imageRUNNER LBP5460 model.



UFR II Printing Technology

\* When the staple feature is used, print speed may be reduced. Refer to specifications for available corner staple positions.

\*\* Requires optional PostScript 3 ROM (standard on Color imageRUNNER LBP5460 model), Hard Disk Drive Kit, and 256MB or 512MB RAM upgrades.

\*\*\* Requires optional Hard Disk Drive Kit.

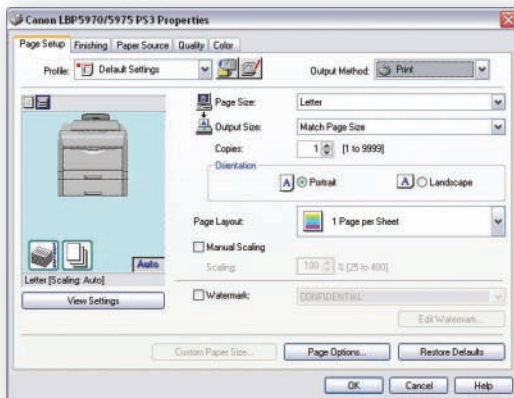
# Robust support for advanced workflows

## Advanced application support

The Color imageRUNNER LBP5975/5970/5460 devices can meet the advanced applications requirements of industries such as education and healthcare through PostScript 3 emulation and bar code printing. PostScript 3 emulation\* delivers accurate rasterization of PS3 print data; the Barcode Printing option ensures the accurate printing of bar codes.

## Consistent imageRUNNER print driver architecture

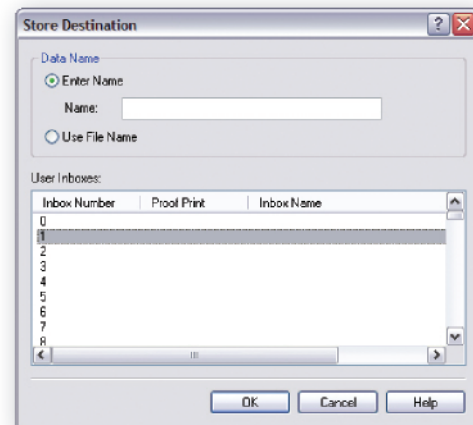
Canon has developed a consistent print driver that spans the entire imageRUNNER line to simplify and standardize the task of producing documents for users. The drivers are compatible with Windows® and Macintosh® environments and provide support for UFR II, PCL, and PostScript 3 emulation page description languages (PDL) to ensure high productivity.\*\* Users can quickly switch between different PDLs based on the types of documents being produced. Booklets can also be easily produced using the auto-imposition feature and finished offline.



Printer Driver User Interface

## Document storage capabilities

Color imageRUNNER LBP5975/5970/5460 models offer a convenient feature to store frequently used print jobs in different boxes with the Hard Disk Drive option. Up to 100 print jobs can be stored on the device and printed from the Remote UI Web-based utility.



User Inbox for Storage Capability

## Rip-once technology

When the Hard Disk Drive option is installed on the Color imageRUNNER LBP5975/5970/5460 models, documents can be set to RIP once and then stored for high-speed printing of large or complicated print jobs at a later time.

\* PostScript 3 emulation is optional on the imageRUNNER LBP5975/5970 models and standard on the Color imageRUNNER LBP5460 model.

\*\* The Macintosh environment is only supported through the UFR II and PostScript 3 emulation driver.

# An easy-to-use, compact device for every user

## Front-load access

All models in the Canon imageRUNNER LBP Series have been designed with front-load access to consumables in mind, so they can be easily situated.

## Simplified maintenance

The imageRUNNER LBP Series provides for quick and easy maintenance of customer-replaceable components. The Color imageRUNNER LBP5975/5970 devices use a drum and toner cartridge for each color, dramatically simplifying the replacement of consumables. The Color imageRUNNER LBP5460 model utilizes four all-in-one cartridges that combine the drum, developer, and toners in a single unit, and a distinctive auto-rewinding tape seal for easier installation. The imageRUNNER LBP3460 model offers the option of a standard or high-yield all-in-one cartridge, combining the black toner and drum in one unit.

## Impressive paper-handling

All models in the Canon imageRUNNER LBP Series feature auto-duplexing capabilities to produce double-sided documents with nonstop productivity. The standard cassettes support a variety of paper types and sizes, and offer even greater flexibility in media types with the standard Multi-Purpose Tray. For larger online paper capacities, each model offers an option for additional cassettes.

## New user interface and enhanced usability

The Color imageRUNNER LBP5460 model features a redesigned user interface that boasts a five-line LCD display for at-a-glance device status, consumable levels, job completion information, and animations to guide users during setup and operation. All models also utilize electronic documentation with powerful search capabilities so users won't have to waste time scanning through large printed manuals.

## Front-Load Access to Toner Cartridges



## Superior Paper Handling



## Intuitive User Interface



Color imageRUNNER LBP5460 model shown above.

# imageRUNNER LBP Series security...

## Data security

When the internal Hard Disk Drive option is installed on Color imageRUNNER LBP models,\* the Erase feature protects your data by completely erasing all traces of deleted information by automatically overwriting that portion of the drive. Enhanced network infrastructure management is also achieved through support for IPv6.\*\*

## Document security

The Canon Color imageRUNNER LBP5975/5970/5460 models offer the ability to protect printed documents with the Secured Print and Encrypted Secured Print functions when the Hard Disk Drive option is installed. The Secured Print function stores documents on the device until the user-defined password for printing is entered. For an added layer of security, the Encrypted Secured Print feature encrypts and password-protects documents before sending them to the device over the network.

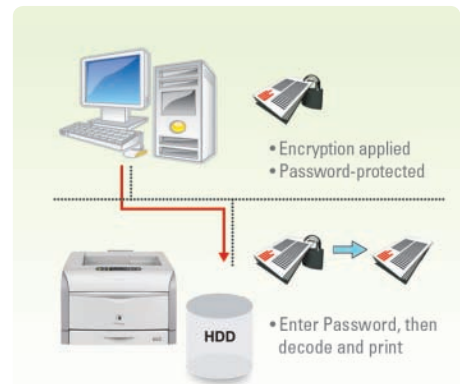
## Wireless LAN connectivity

The Color imageRUNNER LBP models can use Canon's Wireless LAN Kit option – the latest in wireless technology – to connect to a Local Area Network. Supported standards include 802.11g and 802.11b for up to 54 Mbps and 11 Mbps transmission speeds, respectively, and compliance with WPA, WEP, and WEP2 security encryption.

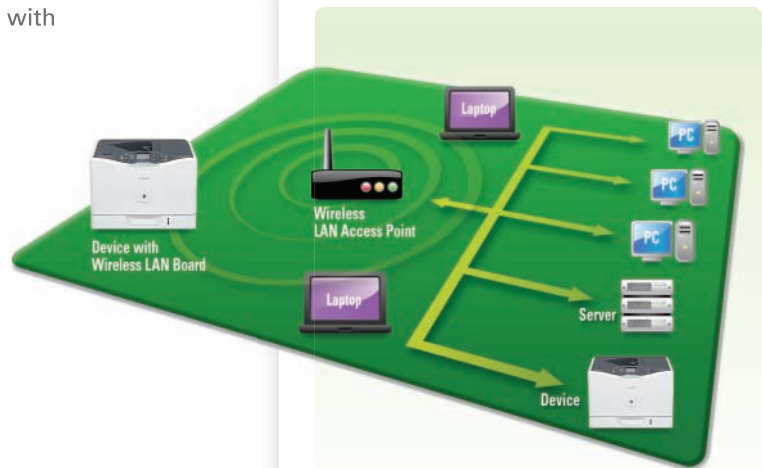
### Hard Disk Drive Kit



### Encrypted Secured Print



### Wireless LAN Kit



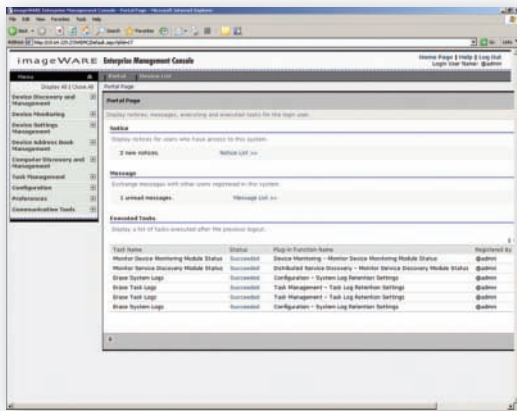
\* Hard Disk Drive options: 30GB for the Color imageRUNNER LBP5975/5970 models; 60GB for the Color imageRUNNER LBP5460 model.

\*\* Support for IPv6 is available on the Color imageRUNNER LBP5975/5970/5460 models only.

# and administration features

## Comprehensive device management

Canon imageWARE Enterprise Management Console (EMC) is a Web-based utility that facilitates centralized management of multiple imageRUNNER or other-branded devices. Built upon an extensible framework, it enables remote management of device settings, discovery of new devices using automated tasks, and device error notifications via e-mail. Administrators can also push the print drivers to PC-based desktop computers for rapid deployment.



imageWARE Enterprise Management Console

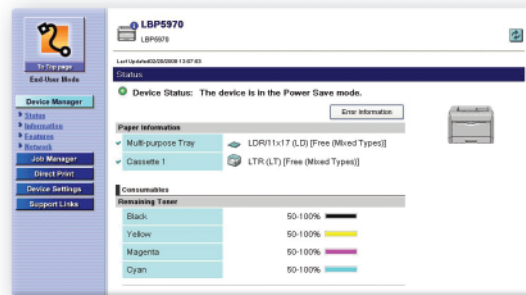
## Device usage accounting

The Color imageRUNNER LBP5975/5970/5460 models provide administrators with the ability to track total device output through the same counter system technology and functionality used in imageRUNNER MFP devices. Usage accounting reports can be easily printed from the device's control panel or accessed via the network with the Remote UI utility.

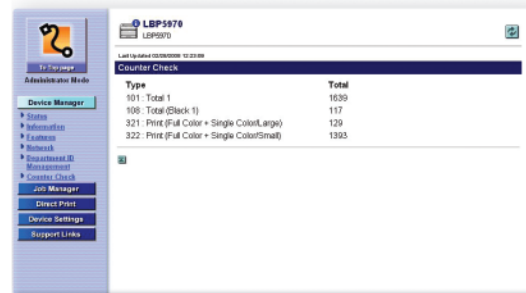
Usage can also be monitored enterprise-wide with Canon's imageWARE EMC and imageWARE Accounting Manager.

## Remote UI (User Interface)

The standard Remote UI utility gives users the ability to check device status, track current job progress, monitor paper and toner levels, and administer boxes of stored documents on a Canon imageRUNNER LBP Series device through a Web browser.



Remote UI Utility



Meter Capture from Remote UI

## Protecting the world we share.



Canon's corporate philosophy of *Kyosei* – to live and work together for the common good – guides our commitment to protect and preserve our most precious resources: the world we share, the communities we serve, and the lives we touch. It permeates everything we do, from research and development and product manufacturing to marketing, sales and distribution, and product life cycle and recovery. An ISO 14001-certified manufacturer, Canon focuses on energy and resource

conservation and the elimination of hazardous substances, which has led to recognition for producing some of the world's most energy-efficient products. Through environmental, conservation, recycling, and sustainability initiatives as well as social and educational programs, Canon's global family is united in bringing you state-of-the-art business technology solutions while contributing to the prosperity of humanity and the protection of the world we share.



## PRODUCT SPECIFICATIONS

### Main Unit

<b>GENERAL</b>	Type:	Desktop Color Laser Printer
	Printing Method:	Electrophoto Method (Color RAPID Fusing System)
	Developing System:	Dry Dual Component Developing System
	Standard PDL:	UFR II/PCL 5c/6
	Optional PDL Support:	PostScript® 3™ Emulation (PS ROM 98B/98C)
Power Supply:	120V-127V 60Hz	
Plug:	NEMA 5-15P	
<b>HARDWARE</b>	Memory (RAM):	Standard 256MB, Maximum 768MB*
	Hard Disk Drive:	Optional 30GB
	CPU:	R4000 Series (400 MHz),** MIPS64 Series (533 MHz)**
<b>INTERFACE</b>	Connections:	10/100Base-TX (RJ-45), Wireless LAN (IEEE 802.11)***
	Other Interface:	USB 2.0 Hi-Speed/USB Full-Speed (USB 1.1 Equivalent)
	User Interface:	LCD 16 Characters x 1 Line, 11 LED Indicators, 9 Operation Keys
<b>SPEED</b>	Print Speed (B/W, Color):	31/30 ppm (Letter)
	Warm-Up Time:	0 Seconds from Standby 30 Seconds or Less from Power On
	First-Print Time:	LBP5975: 8.9 Seconds (B/W); 10.4 Seconds (Full Color) LBP5970: 7.5 Seconds (B/W); 9.0 Seconds (Full Color)
<b>RESOLUTION</b>	Print:	UFR II: 1200 x 1200 dpi ▲ (Super Fine Mode) 2400-dpi equivalent x 600 dpi (Fine Mode) PCL5c/6: 2400-dpi equivalent x 600 dpi PS3 (Optional): 1200 x 1200 dpi ▲ (Text and Line Only) 2400-dpi equivalent x 600 dpi
	Engine:	1200 x 1200 dpi
	Halftone:	256 Gradations (Continuous-Tone)
<b>PRINT DRIVERS</b>	UFR II:	Windows® 2000/XP/Windows Vista®/Server 2003/Server 2008 Citrix MetaFrame Macintosh® (OS 10.3.3 or Later) Novell® NetWare® v3.20/4.1/4.11/4.20/5.0/5.1/6.0/6.5 (IPX/SPX)
	PCL 5c/6:	Windows 2000/XP/Windows Vista/Server 2003/Server 2008 Citrix MetaFrame
	PS3 Emulation:	Windows 2000/XP/Windows Vista/Server 2003/Server 2008 Citrix MetaFrame Macintosh (OS 10.3.3 or Later)
<b>SIZE</b>	Dimensions (H x W x D):	LBP5975: 17-1/4" x 21" x 25" (Main Unit) LBP5970: 15" x 21" x 25" (Main Unit)
	Installation Space (W x D):	21-1/2" x 37-3/5" (When Multi-Purpose Tray is Extended)
	Weight:	LBP5975: Approx. 115.7 lb. (52.5kg)† LBP5970: Approx. 106.9 lb. (48.5kg)†
<b>POWER CONSUMPTION</b> (Average)	Operating:	653W (Approx., Average)
	Standby:	34W (Approx., Average)
	Power Save Mode:	14W (Approx., Average)
	Deep Sleep Mode:	1W (Approx., Average)

<b>PAPER SOURCES</b>	Standard Cassette:	230-Sheet Paper Cassette (20 lb. Bond) 90-Sheet Multi-Purpose Tray
	Optional:	550-Sheet Paper Cassette (Up to 3)
	Maximum:	1,970 Sheets
<b>PAPER SIZES</b>	Cassettes:	Ledger, Legal, Letter, Executive
	Multi-Purpose Tray:	Ledger, Legal, Statement, Letter, Executive, Custom Sizes (Width: 3-7/8" to 5-3/4"; Length: 5-1/2" to 18"), Long Size Paper (Width: 8-3/8" to 11-3/4"; Length: 18" to 47-1/4"), and Envelopes
	Maximum Size:	11" x 17" (305mm x 457mm)
<b>PAPER WEIGHT</b>	Cassettes:	17 lb. Bond to 28 lb. Bond
	Multi-Purpose Tray:	17 lb. Bond to 80 lb. Cover
<b>PAPER HANDLING</b>	Paper Output:	Face-Down
	Output Capacity:	Approx. 250 Sheets (20 lb. Bond)
	Duplexing:	Standard Automatic Trayless Duplexing (Executive to 11" x 17")
<b>FINISHING</b> (LBP5975 Only)	<b>Corner Stapling</b>	
	Staple Positions:	Letter: Portrait—Upper Left, Lower Right Landscape—Upper Right, Lower Left Executive: Portrait—Upper Left, Lower Right Landscape—Upper Right, Lower Left Ledger: Portrait—Upper Right, Lower Left Landscape—Upper Left, Lower Right
	Output Capacity:	Up to 15 Pages Per Set (Letter/Executive/Ledger)
	Paper Weight:	17 lb. Bond to 28 lb. Bond
<b>TONER</b> (Estimated Yield)	Black:	10,000 images at 5% coverage††
	Full Color:	6,000 images at 5% coverage††

### Optional Accessories

<b>PAPER FEEDER UNIT PF-98B†††</b>	Paper Sizes:	Standard: Ledger, Legal, Letter, Executive Custom: Width 8-3/8" to 11-3/4"; Length 8-3/8" to 17"
	Cassette Capacity:	550 Sheets x 3 Cassettes (20 lb. Bond)
	Dimensions (H x W x D):	5-5/8" x 21-1/2" x 27-1/2"
	Weight:	Approx. 24.3 lb. (11kg)
<b>OTHER</b>	PostScript 3 Emulation/Barcode Printing ROM A-98B*	
	PostScript 3 Emulation ROM A-98C*	
	Wireless Network Interface Board NB-W2	
	Hard Disk Kit HD-98B	
	Cabinet W1 (Small), X1 (Large)***	
Expansion RAM ER-128A, ER-256A, ER-512A*		

\* One memory slot available for expanding memory.

\*\* The upper limit of the frequency range.

\*\*\* Through optional Wireless LAN Kit.

▲ If 1200-dpi print is selected, engine speed will be reduced.

† Excluding the toner cartridges and drum cartridges.

†† When printing letter-sized paper at 5% page coverage with the default print density settings. ††† Up to three additional paper cassettes can be added.

• PostScript 3 Emulation/Barcode Printing ROM A-98B and PostScript 3 Emulation ROM A-98C cannot be installed together.

■ Up to three additional paper cassettes can be installed when Cabinet-W1 is attached.

■ Up to one additional paper cassette can be installed when Cabinet-X1 is attached.



## PRODUCT SPECIFICATIONS

### Main Unit

<b>GENERAL</b>	Type:	Desktop Color Laser Printer
	Printing Method:	Electrophoto Method (Color RAPID Fusing System)
	Developing System:	Dry Dual Component Developing System
	Standard PDL:	UFR II/PCL 5c/PCL6/PostScript 3 Emulation
	Power Supply:	120V 60Hz
Plug:	NEMA 5-15P	
<b>HARDWARE</b>	Memory (RAM):	Standard 256 MB, Maximum 768 MB*
	Hard Disk Drive:	Optional 60GB
	CPU:	R4000 Series (400 MHz)** MIPS64 Series (533 MHz)**
<b>INTERFACE</b>	Connections:	10/100Base-TX (RJ-45) Wireless LAN (IEEE 802.11)***
	Other Interface:	USB 2.0 Hi-Speed USB Full-Speed (USB 1.1 Equivalent)
	User Interface:	LCD 22 Characters x 5 Lines, 9 LED Indicators, 10 Operation Keys
<b>SPEED</b>	Print Speed (B/W, Color):	Up to 31/31 ppm (Letter)
	Warm-Up Time:	7 Seconds from Standby 60 Seconds or Less from Power On
	First-Print Time:	10.2 Seconds (B/W) 10.4 Seconds (Color)
<b>RESOLUTION</b>	Print:	2400-dpi equivalent x 600 dpi
	Engine:	600 x 600 dpi
	Halftone:	256 Gradations (Continuous-Tone)
<b>PRINT DRIVERS</b>	UFR II/PS3:	Windows 2000/XP/Windows Vista/Server 2003/Server 2008 Citrix MetaFrame Macintosh (OS 10.4 or Later) Novell NetWare v3.20/4.1/4.11/4.20/5.0/5.1/5.5 (IPX/SPX) Novell NetWare v6.0/6.5 (TCP/IP)
	PCL 5c/6:	Windows 2000/XP/Windows Vista/Server 2003/Server 2008 Citrix MetaFrame Novell NetWare v3.20/4.1/4.11/4.20/5.0/5.1/5.5 (IPX/SPX) Novell NetWare v6.0/6.5 (TCP/IP)
<b>SIZE</b>	Dimensions (H x W x D):	14-5/8" x 20-1/4" x 20-3/4" (Main Unit)
	Installation Space (W x D):	29-1/8" x 32-1/4" (When Multi-Purpose Tray is Extended)
	Weight:	Approx. 68.3 lb. (31.0 kg)†
<b>POWER CONSUMPTION</b> (Average)	Operating:	573W (Approx., Average)
	Standby:	47W (Approx., Average)
	Power Save Mode:	18W (Approx., Average)
	Deep Sleep Mode:	1.8W (Approx., Average)

<b>PAPER SOURCES</b>	Standard:	250-Sheet Paper Cassette (20 lb. Bond) 100-Sheet Multi-Purpose Tray
	Optional:	500-Sheet Paper Cassette
	Maximum:	850 Sheets
<b>PAPER SIZES</b>	Standard Cassette:	Letter, Executive, Custom Sizes (Width: 5-7/8" to 8-1/2"; Length: 8-1/4" to 11-5/8")
	Multi-Purpose Tray:	Legal, Letter, Executive, Statement, Custom Sizes (Width: 3-7/8" to 8-1/2"; Length: 5-3/4" to 14"), and Envelopes
	Optional Cassette:	Legal, Letter, Executive, Custom Sizes (Width: 5-7/8" to 8-1/2"; Length: 8-1/4" to 14")
	Maximum Size:	Legal (216mm x 355.6mm)
<b>PAPER WEIGHT</b>	Standard Cassette:	16 lb. Bond to 60 lb. Cover
	Multi-Purpose Tray:	16 lb. Bond to 80 lb. Cover
	Optional Cassette:	16 lb. Bond to 65 lb. Cover
<b>PAPER HANDLING</b>	Paper Output:	Face-Down
	Output Capacity:	Approx. 250 Sheets (20 lb. Bond)
	Duplexing:	Standard Automatic Trayless Duplexing (Executive to Legal)
<b>TONER †† ▲</b> (Estimated Yield)	Average Black (GPR-29):	10,000 Standard Pages
	Average Composite Cyan/Magenta/Yellow (GPR-29):	8,500 Standard Pages
<b>PAPER FEEDER UNIT PF-723‡</b>	Paper Sizes:	Legal, Letter, Executive, Custom Sizes (Width: 5-7/8" to 8-1/2"; Length: 8-1/4" to 14")
	Paper Capacity:	500 Sheets (20 lb. Bond)
	Dimensions (H x W x D):	6-3/8" x 20-1/4" x 20-3/4"
	Weight:	Approx. 17.2 lb. (7.8 kg)
<b>OTHER</b>	Barcode Printing ROM A-723A	
	Wireless Network Interface Board NB-W2	
	Hard Disk Kit HD-723	
	Expansion RAM ER-128A, ER-256A, ER-512A*	

\* One memory slot available for expanding memory.

\*\* The upper limit of the frequency range.

\*\*\* Through optional Wireless LAN Kit.

† Excluding the toner cartridges.

†† Toner cartridge yield in accordance with ISO/IEC 19798.

▲ Main unit ships with starter cartridges: Average Black (GPR-29) Starter Cartridge: 3,000 standard pages; Average Composite Cyan/Magenta/Yellow (GPR-29) Starter Cartridge: 4,100 standard pages.

‡ Up to one paper cassette can be added.



## PRODUCT SPECIFICATIONS

### Main Unit

<b>GENERAL</b>	Type:	Desktop Laser Printer
	Printing Method:	Electrophoto Method (RAPID Fusing System)
	Developing System:	Dry Dual Component Developing System
	Standard PDL:	UFR II/PCL 5e/6
	Power Supply:	100-127V, 50/60Hz
Plug:	NEMA 5-15P	
<b>HARDWARE</b>	Memory:	Standard 64MB RAM, Maximum 320MB RAM*
	CPU:	R4000-333MHz**
<b>NETWORK</b>	Connections:	10/100Base-TX (RJ-45)
	Other Interface:	USB 2.0 Hi-Speed USB Full-Speed (USB 1.1 Equivalent)
	User Interface:	LCD 16 Characters x 1 Line, 8 LED Indicators, 8 Operation Keys
<b>SPEED</b>	Print Speed (B/W):	35 ppm (Letter)
	Warm-Up Time:	0 Seconds From Standby 9 Seconds After Powering On
	First-Print Time:	8.0 Seconds
<b>RESOLUTION</b>	Print:	UFR II/PCL 5e/6: 600 x 600 dpi 2400-dpi equivalent x 600 dpi
	Engine:	600 x 600 dpi
	Halftone:	256 Gradations (Continuous-Tone)
<b>PRINT DRIVERS</b>	UFR II:	Windows 2000/XP/Windows Vista/Server 2003/ Server 2008 Citrix MetaFrame Macintosh (OS 10.2.8 or Later)
	PCL 5c/6:	Windows 2000/XP/Windows Vista/Server 2003/ Server 2008 CitrixMetaFrame
<b>SIZE</b>	Dimensions (H x W x D):	10-3/4" x 17-5/8" x 16-1/4" (Main Unit)
	Installation Space (W x D):	17-5/8" x 24-1/2" (When Multi-Purpose Tray is Extended)
	Weight:	Approx. 35.5 lb. (16.1kg)***
<b>POWER CONSUMPTION (Average)</b>	Operating:	580W (Approx., Average)
	Standby:	10W (Approx., Average)
	Deep Sleep Mode:	7W (Approx., Average)

<b>PAPER SOURCES</b>	Standard:	250-Sheet Paper Cassette (20 lb. Bond) 100-Sheet Multi-Purpose Tray
	Optional:	500-Sheet Paper Cassette
	Maximum:	850 Sheets
<b>PAPER SIZES</b>	Drawers:	Legal, Letter, Executive, Custom Sizes (Width: 5-7/8" to 8-1/2"; Length: 8-3/8" x 14")
	Multi-Purpose Tray:	Legal, Letter, Executive, Statement, Index Card, Custom Sizes (Width: 3" to 8-1/2"; Length: 5" to 14") and Envelopes
	Maximum Size:	Legal (216mm x 355.6mm)
<b>PAPER WEIGHT</b>	Cassettes:	17 lb. Bond to 35 lb. Bond
	Multi-Purpose Tray:	17 lb. Bond to 65 lb. Cover
<b>PAPER HANDLING</b>	Paper Output:	Face-Down/Face-Up
	Output Capacity:	Approx. 250 Sheets (Face-Down) Approx. 50 Sheets (Face-Up)
	Duplexing:	Standard Automatic Trayless Duplexing (Legal, Letter)
<b>TONER (Estimated Yield)</b>	Black (Cartridge 110):	6,000 Standard Pages†
	Black (Cartridge 110 II):	12,000 Standard Pages†
<b>PAPER FEEDER UNIT PF-36††</b>	Paper Sizes:	Legal, Letter, Executive, Custom Sizes (Width: 5-7/8" to 8-1/2"; Length: 8-3/8" x 14")
	Cassette Capacity:	500 Sheets (20 lb. Bond)
	Dimensions (H x W x D):	6-5/8" x 17-5/8" x 18-7/8"
	Weight:	Approx. 12.4 lb. (5.6kg)
<b>OTHER</b>	Expansion RAM ER-128A, ER-256A, ER-512A*	

### Optional Accessories

\* One memory slot available for expanding memory.

\*\* The upper limit of the frequency range.

\*\*\* Excluding the toner cartridges and drum cartridges.

† Toner cartridge yield in accordance with ISO/IEC 19752.

†† One additional paper cassette can be added.

**Canon**  
image*ANYWARE*

1-800-OK-CANON  
www.usa.canon.com

Canon U.S.A., Inc.  
One Canon Plaza  
Lake Success, NY 11042

As an ENERGY STAR® Partner, Canon U.S.A., Inc. has determined that these products meet the ENERGY STAR guidelines for energy efficiency. ENERGY STAR and the ENERGY STAR mark are registered U.S. marks. CANON, IMAGERUNNER, and the GENUINE logo are registered trademarks of Canon Inc. in the United States and may also be registered trademarks or trademarks in other countries. IMAGEWARE is a registered trademark of Canon U.S.A., Inc. in the United States and is a trademark of Canon Inc. in certain other countries. IMAGEANYWARE is a trademark of Canon. All other referenced product names and marks are trademarks of their respective owners and hereby acknowledged. Specifications and availability subject to change without notice. All printer output images are simulated. ©2009 Canon U.S.A., Inc. All rights reserved.

0133W076  
0709-LBPSERIES-6M-LMC

